



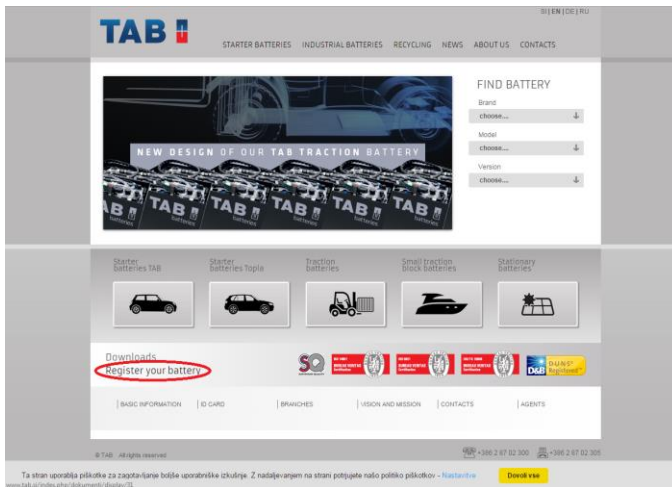
**TAB Battery
Replacement Tool**

**Application Suite
Install Guide**

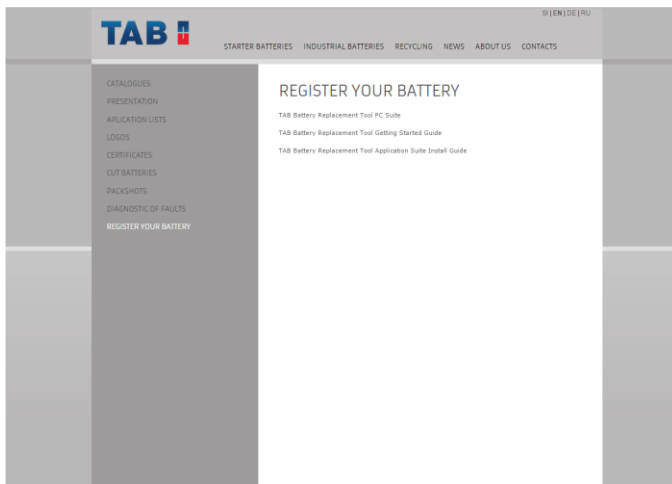
TAB Battery Replacement Tool Download Application

Follow this procedure to download the latest PC Suite from the <http://www.tab.si/> website. If you experience any problems then contact Customer Services by using the email address shown; tab@spsupport.com

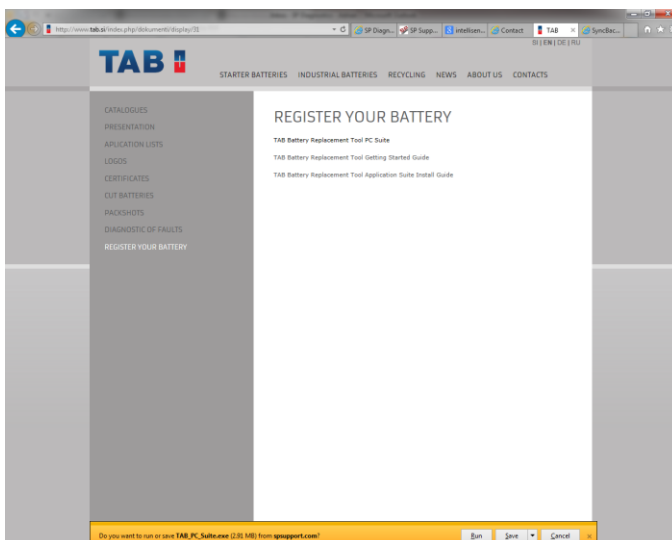
1. Select the 'Replace your battery' text shown here circled in red.



2. Select '**TAB Battery Replacement Tool PC Suite**' from the available options. If you do experience problems please email support at tab@spsupport.com



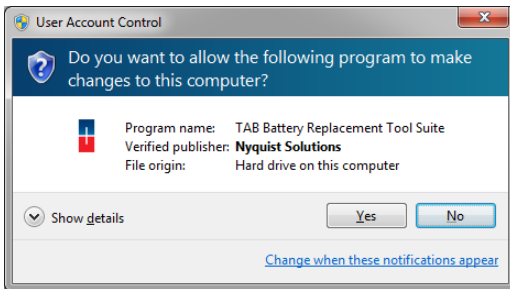
3. Select Run or Save. If you Save first then ensure you Run the application before continuing.



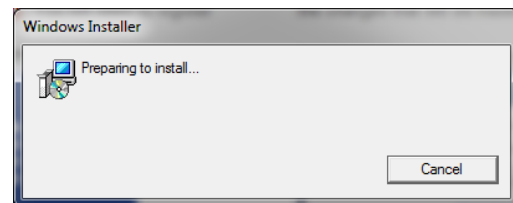
TAB Battery Replacement Tool Installation Procedure

Follow this procedure if you are installing the TAB Battery Replacement Tool PC Suite for the first time. If you experience problems with the installation then please ensure you have Administrator rights on your PC. If you are still experiencing problems then please use the web form on the email address shown; tab@spsupport.com

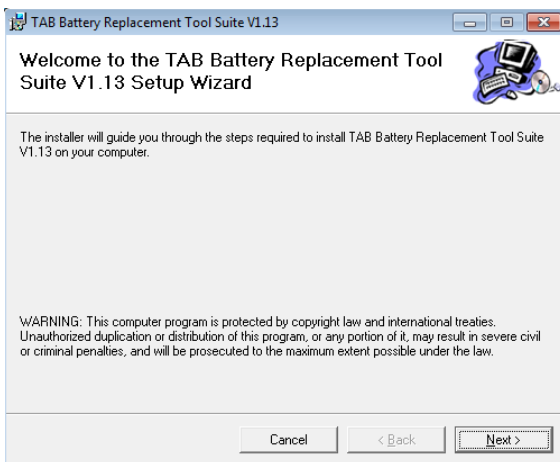
1. When you run the installer you are presented with a User Account Control message warning you that the application you are installing will make changes to your computer. It is imperative to ensure that you have Administrator rights on the PC before continuing



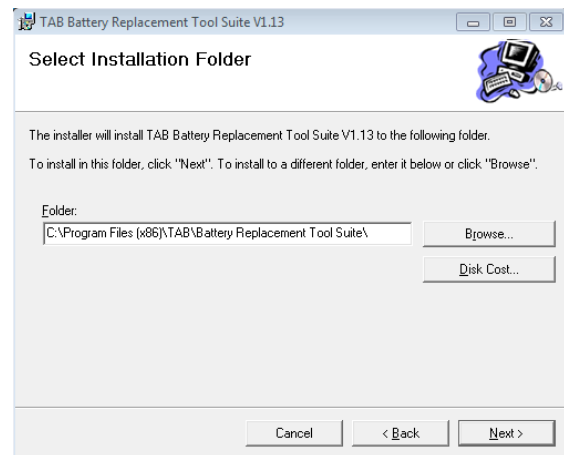
2. Wait while the PC prepares to install.



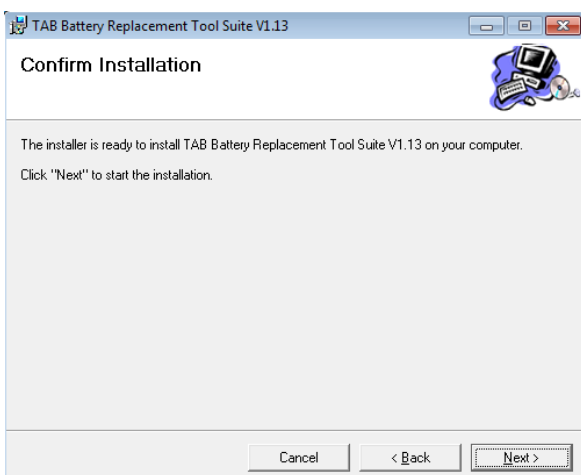
3. After you have run the TAB Battery Replacement Tool suite application, the **'Welcome to the TAB Battery Replacement Tool Setup Wizard'** will be displayed, select **'Next'**.



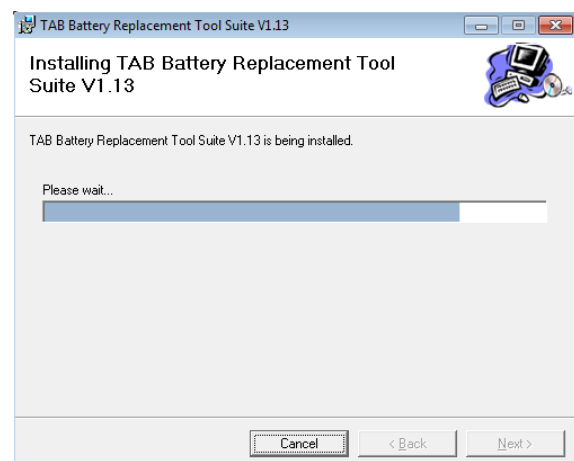
4. The **'Select installation Folder'** screen will appear, accept the folder if appropriate and select **'Next'**.



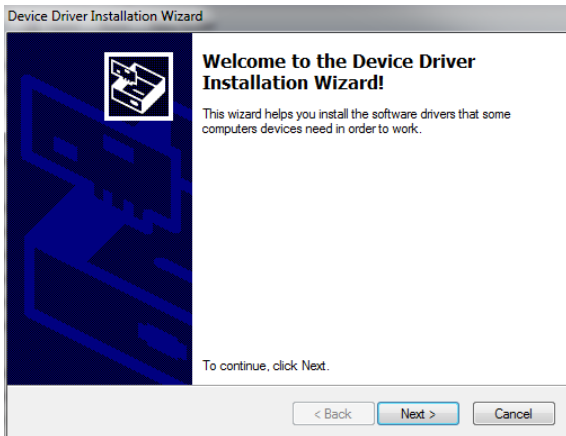
5. When the **'Confirm Installation'** screen appears select **'Next'**.



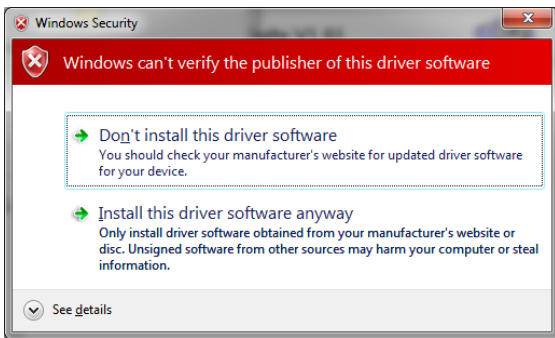
6. The **'Installing TAB Battery Replacement Tool Suite'** screen will be launched, once the software has been successfully installed select **'Next'**.



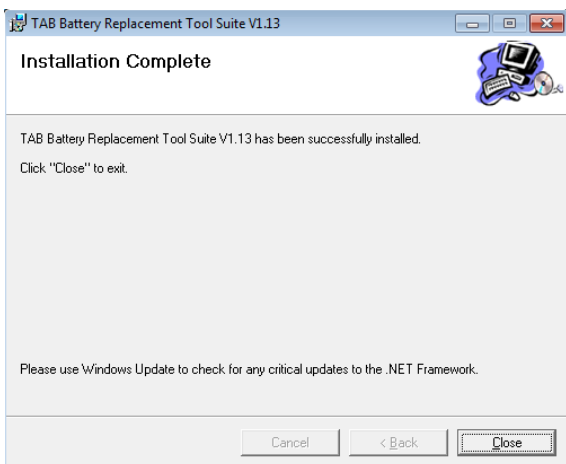
7. As this is the first time that your TAB Battery Replacement Tool has been connected to your PC, the **'Device Driver Installation Wizard'** popup will be displayed.



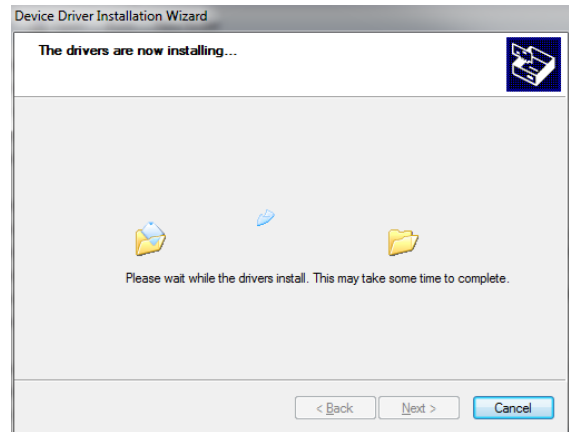
9. Your PC may give you a warning saying the Publisher is unknown. Select **'Install the driver software anyway'** to accept the changes that will be made.



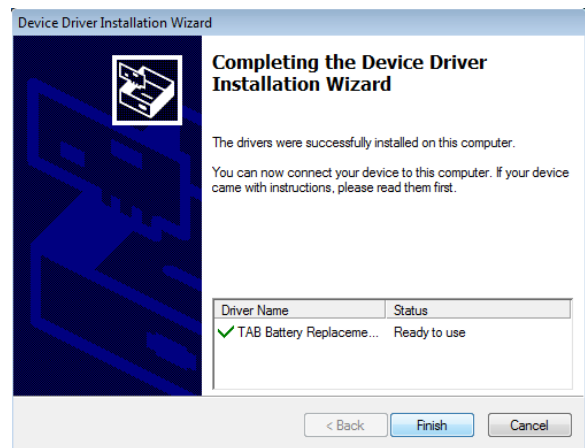
11. You will see the screen **'Installation Complete'** that confirms that the installation was successful, select **'Close'**.



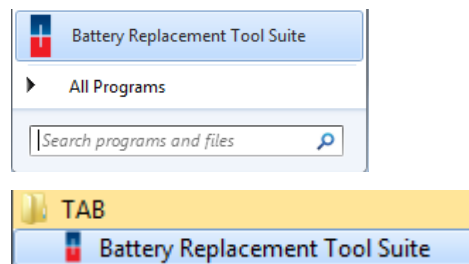
8. The installation will take a short time to complete; the screen below will be displayed during this process.



10. The **'Completing the Device Driver Installation Wizard'** screen is displayed, when your TAB Battery Replacement Tool has been detected. Select **'Finish'**.

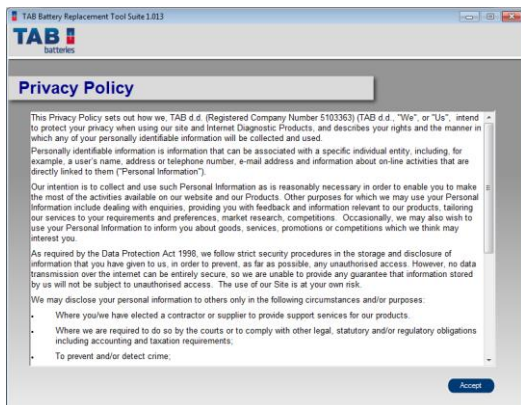


12. Run the TAB Battery Replacement Tool Suite Application from the start menu, select **'Start' - 'Programs' - 'TAB' - 'Battery Replacement Tool Suite'**. (There will also be an icon installed onto your desktop).



TAB Battery Replacement Tool Registration Procedure

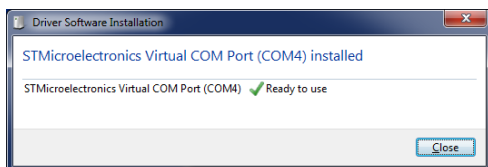
1. Read the Privacy Policy and accept before continuing.



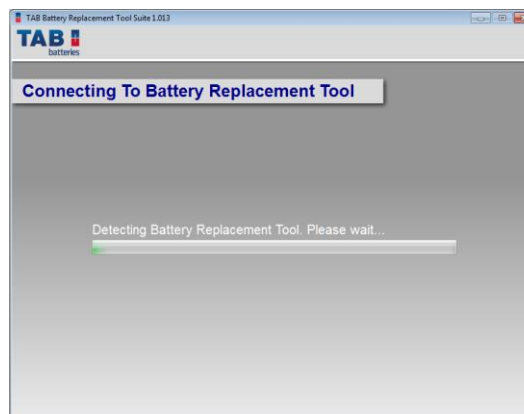
2. Connect the USB cable supplied to the TAB Battery Replacement Tool and then to a USB port on the PC. A main USB port (on the rear of the PC) as opposed to an extension (on the front of the PC) is preferable.



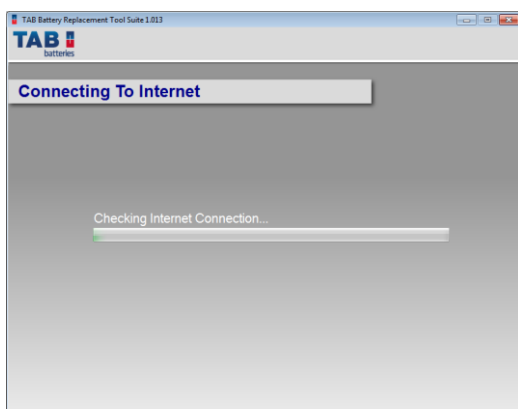
3. The Driver should indicate that it is fully installed and ready to use. If this does not happen, go to the Installing Driver section.



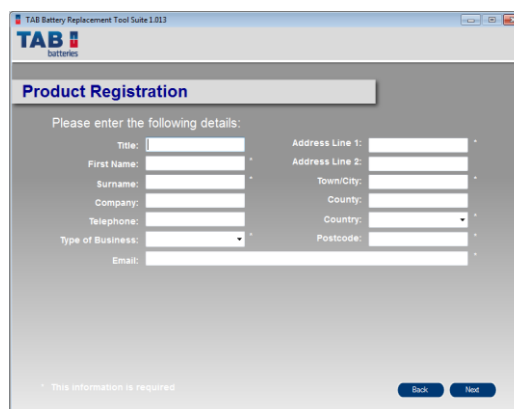
4. When you press the 'Next' button, the TAB Battery Replacement Tool will be detected by the TAB Battery Replacement Tool Suite.



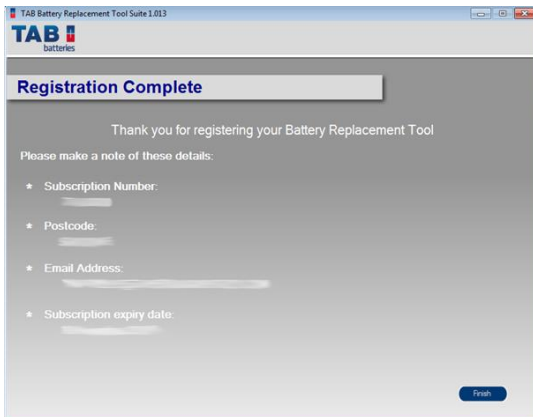
5. The Suite will then check an internet connection is present. If you experience problems at this point you will be directed to the Tests & Checks section of the TAB Battery Replacement Tool Suite.



6. Complete the 'Product Registration' ensuring you complete all sections marked with a '*'. Once complete press the 'Next' button.

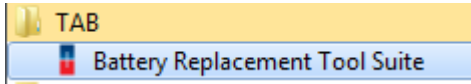


7. Once the information has been submitted, the Subscription Number, Postcode, Email address and subscription expiry date will be displayed back. Although these details are stored on your PC, It would be worthwhile making a note of these details in case you require them in the future.

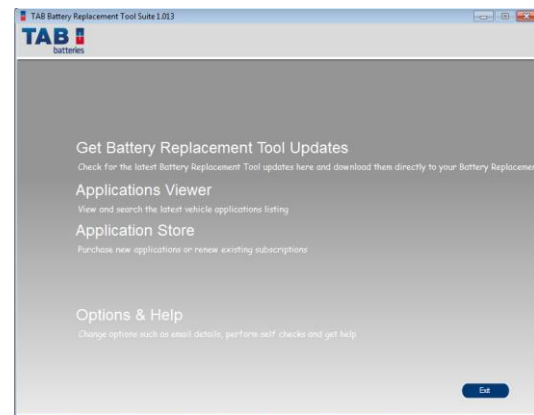


TAB Battery Replacement Tool Update Procedure

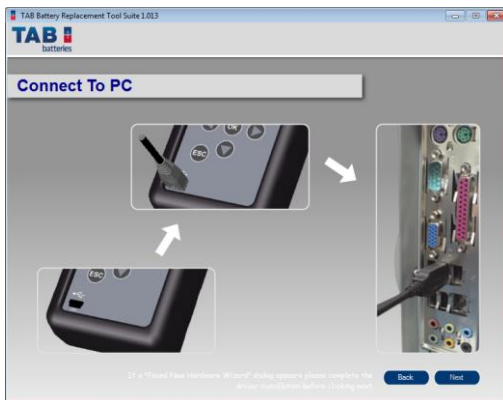
1. Run the TAB Battery Replacement Tool Suite Application. From the start menu, select **'Start' – 'All Programs' – 'TAB Batteries' – 'TAB Battery Replacement Tool Suite'**. (There will also be an icon installed onto your desktop).



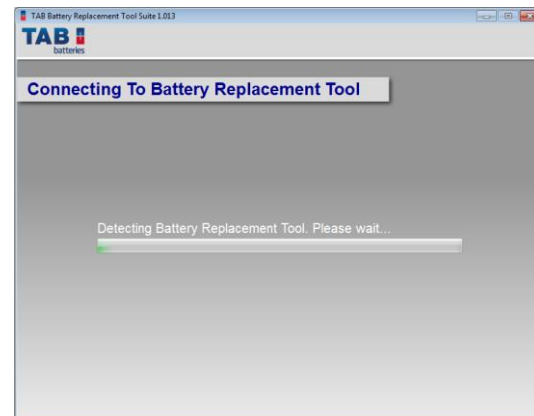
2. Select the option **'Get Battery Replacement Tool Updates'**.



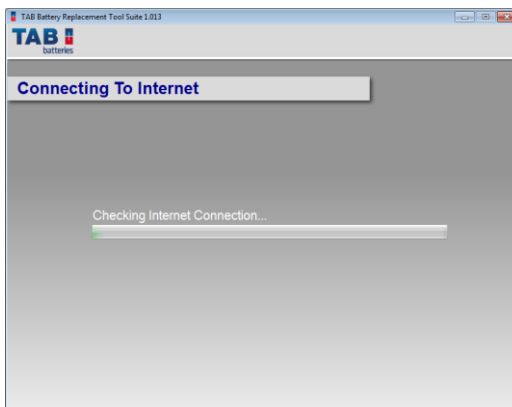
3. Connect the USB cable supplied to the TAB Battery Replacement Tool and then to a USB port on the PC. A main USB port (on the rear of the PC) as opposed to an extension (on the front of the PC) is preferable.



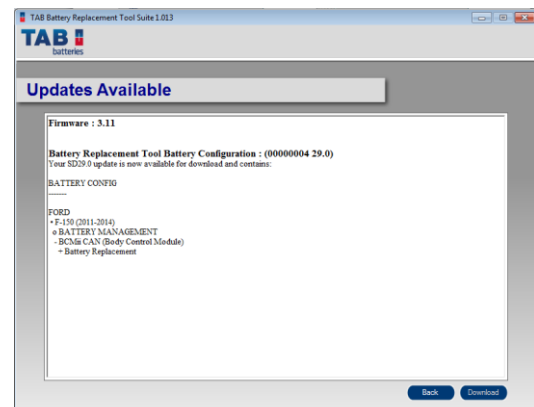
4. When you press the **'Next'** button, the TAB Battery Replacement Tool will be detected by the TAB Battery Replacement Tool Suite.



5. The Suite will then check an internet connection is present. If you experience problems at this point you will be directed to the Tests & Checks section of the TAB Battery Replacement Tool Suite.

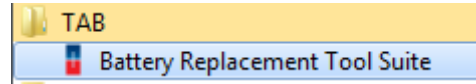
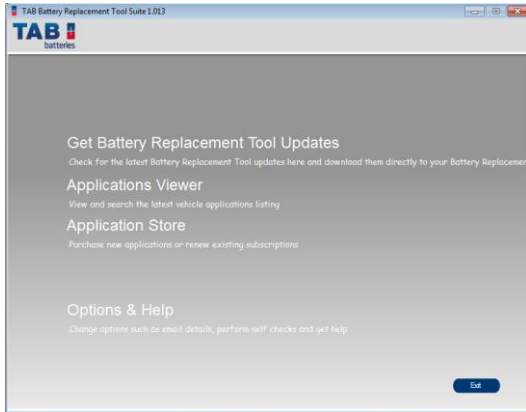


6. Follow the on screen instructions to update your tool to the latest version. A description of the updates will also be shown on screen.

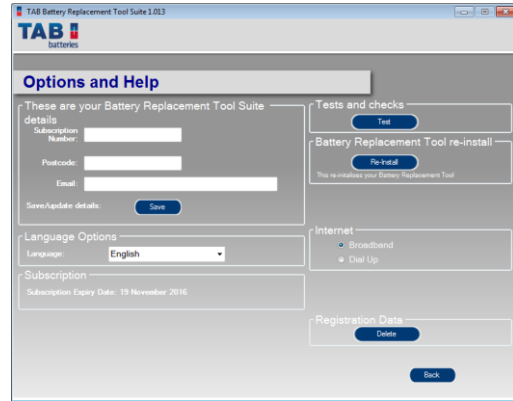


Options

1. Run the TAB Battery Replacement Tool Suite from the start menu select **'Start' – 'All Programs' – 'TAB' – 'Battery Replacement Tool Suite'**. (There will also be an icon installed onto your desktop).
2. Select **'Options'** from the menu.

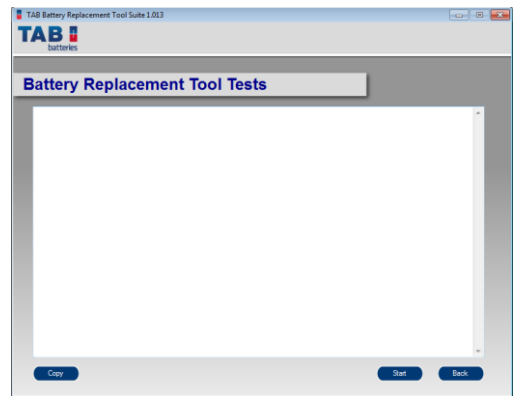
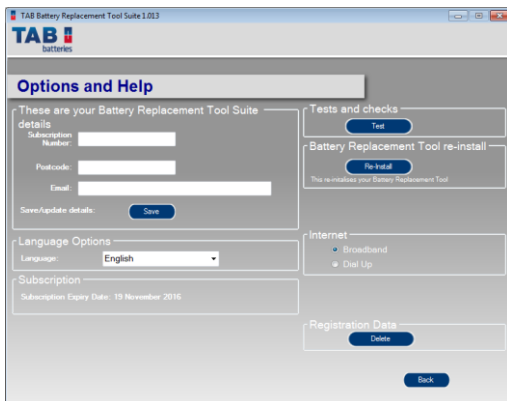


3. If you are advised to change your **Subscription Number & Postcode** you can do this from here.



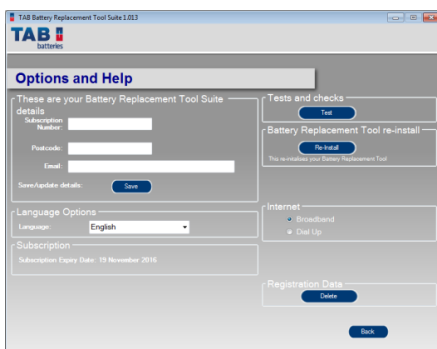
4. Selecting the **'Tests and checks'** button allows you to perform tests to verify that your TAB Battery Replacement Tool is functioning correctly and that you are able to connect to the website and download the latest software.

5. You will be asked to perform these tests if you experience problems and need to contact a customer services representative or engineer. This information is also reported back to the website in order for the engineer to assist you in resolving your problem.



6. Selecting the **'Battery Replacement Tool re-install'** button allows you to force the TAB Battery Replacement Tool to download your latest update again. This can be used if you think there is a problem with your last update.

7. Connect your TAB Battery Replacement Tool as per the instructions within the TAB Battery Replacement Tool update suite. Connect mini USB to TAB Battery Replacement Tool and USB to PC. Refer to the **'TAB Battery Replacement Tool Update Procedure'** for more information.



Contact us

If you are experiencing problems with your TAB Battery Replacement Tool or you are not sure if a vehicle is currently supported, you can contact us for help and advice. We will respond to the email address provided with answers to your question as quickly as we can. Alternatively, you can call our English speaking support line.

Telephone: +44 1225 744777

Email: tab@spsupport.com

Clicking the link will open your email client on your PC to allow you to send an email to the support team. If you do not have an email program installed on your pc then you can copy this link and use in any email program.

Please can you also provide information of the version and build you are currently running on your TAB Battery Replacement Tool.

To do this you need to plug the tool in to the USB and copy the information displayed on the screen of the tool or navigate to the information screen when plugged into a vehicle.



www.tab.si